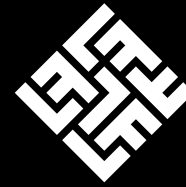


Applying adaptive, results-based management (aRBM) to the IsDB projects funded under the Lives and Livelihoods Fund



Lives and
Livelihoods
Fund

aRBM Review | Issue #1 | April 2022



BILL & MELINDA
GATES foundation



IsDB
البنك الإسلامي للتنمية
Islamic Development Bank



QATAR FUND
FOR DEVELOPMENT
مندوق قطر للتنمية

Introducing aRBM and what it means for the IsDB



Shifting our focus to impact.

Adaptive Results-Based Management (aRBM) is about one significant change. Focusing on the accomplishment of our intended real results benefiting the communities and the people that we serve.

The IsDB is a large and complex ecosystem with projects in multiple countries. Our work will never be simple, but it can be focused. aRBM is about reinforcing a shared sense of purpose, a clear view of impact, a learning mindset, and a path towards lasting change.

Today more than ever,
we need to:

MAKE IT COUNT.

Make our time count
Make our data count
Make each meeting count
Make our investment count
Make our experience count

Over 6 years, the scale of the resources we have mobilized through the IsDB's LLF projects is massive.



\$1.5bn
approved



~37
projects



Across
22
countries



3
different
sectors



~200
IsDB officials
involved

The work you have done so far has been amazing. We want to build on that and further support you in achieving results in a way that matters to you. This is why we are making sure that the application of aRBM is a practical and impactful one.



There are four goals of the aRBM approach

- 1 Improving transparency and accountability at the project and portfolio levels**
as we arrive at a shared understanding of the current state,
- 2 Deepening the impact**
of select projects through aRBM systems and processes. We will work to keep projects delivering on their promises,
- 3 Using performance information to adjust our strategic direction and operational activities**
we will learn from mistakes and strive for continuous improvement,
- 4 Improving strategic communication of project performance, learnings and achievements**
until we are known as a leader in achieving results.

You will have the ability to:

- ◆ Fast track implementation by responding quickly and effectively to challenges
- ◆ Identify expected results and the activities needed to accomplish them using adaptive tools rooted in local context
- ◆ Better plan your work to get quality time to focus on M&E and learnings activities
- ◆ Learn rapidly and improve continuously by tracking results and knowledge sharing across the IsDB project teams
- ◆ Build the capacity of the project teams for better coordination and support
- ◆ Communicate about your work, your successes and lessons learned across the IsDB/LLF ecosystem

A dedicated Delivery associates (DA) support team for 3 years will work with you on the RBM adaptation process.

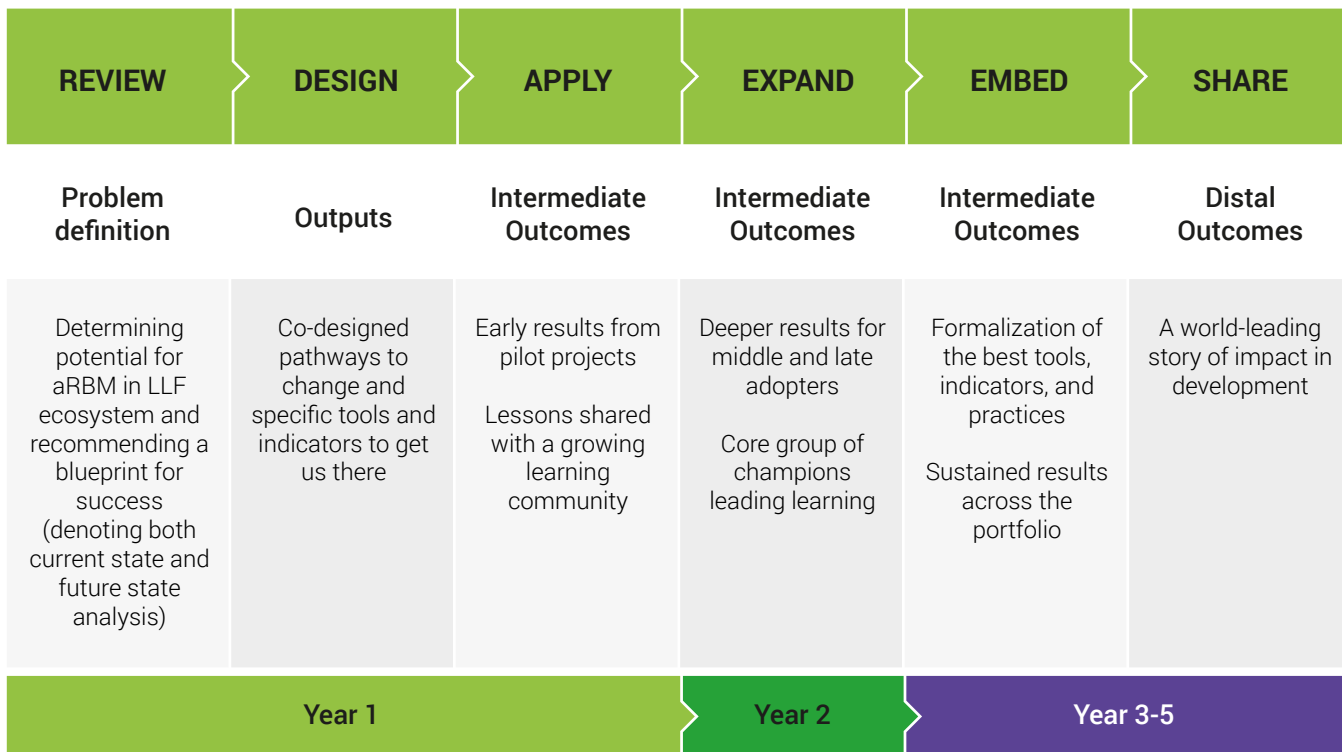
How will the aRBM approach be applied?



Our interactive approach ensures aRBM is developed and delivered according to the needs of teams throughout the IsDB/LLF ecosystem, including projects, countries, regional hubs, partners, donors, and more. We will focus on those under the Dakar and Abuja hubs as well as the IsDB's headquarters.

OUR PATHWAY TO CHANGE:

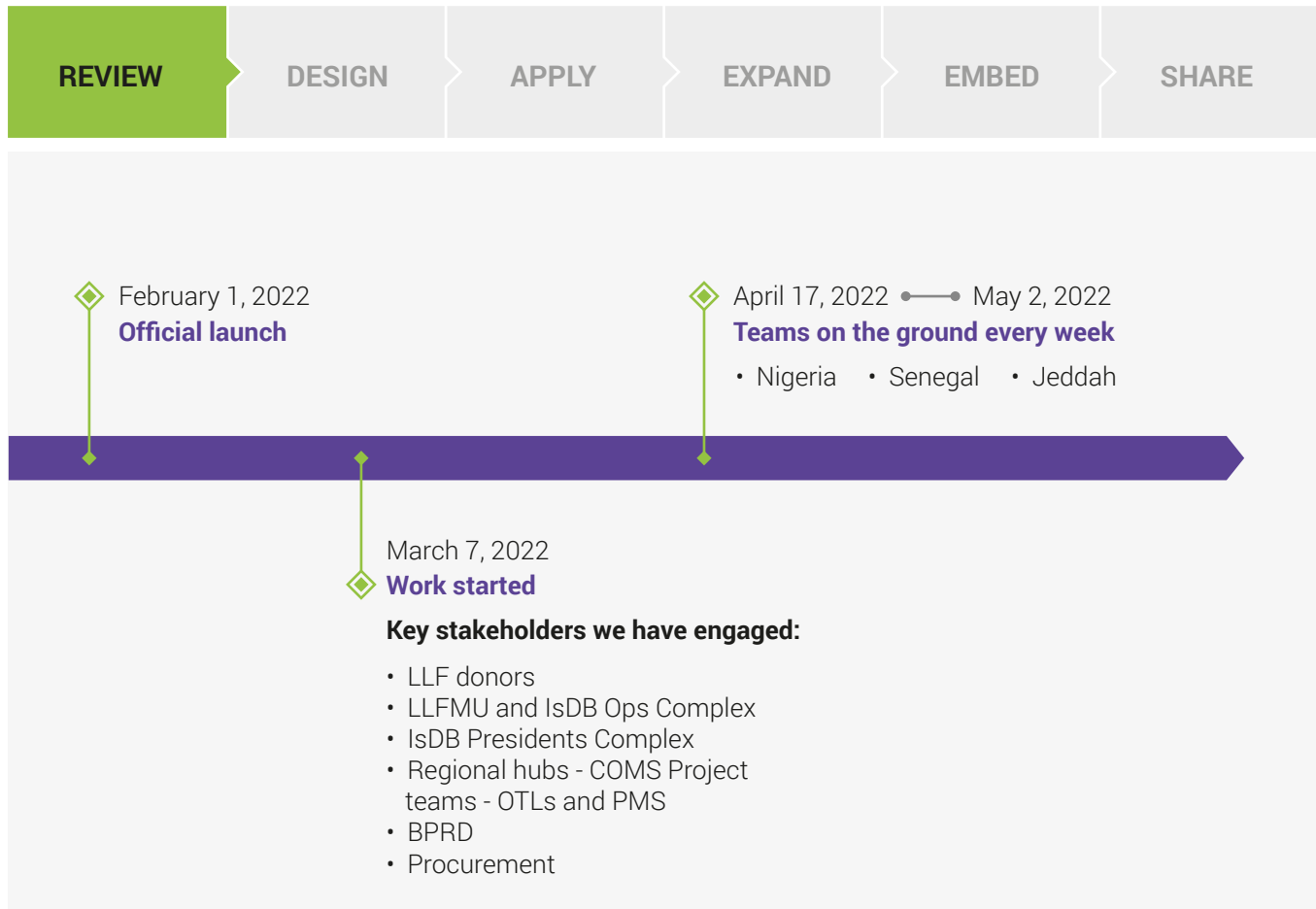
Steps we would take to achieve the aRBM objectives



Where are we in our aRBM journey?



We are 1 month into our 3-month inception phase. Our emphasis to date has been **stakeholder engagement and immersion in the IsDB/LLF ecosystem**. We have been reaching out to connect with many of you and we will continue to reach out to many others as we move forward.



COMING UP NEXT

We value you and put you at the very center of everything that we do. Therefore, we are very keen to keep you engaged and to keep you informed.



We will share with you a Google survey soon to better understand your thoughts on aRBM and to better align our perceptions on what it is and isn't.

We will update you on advancement and results as we move forward. Stay tuned!



We are eager to hear from you.

Please send us your inquiries about aRBM at
llf-mu@isdb.org