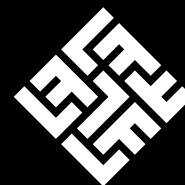


Applying adaptive results-based management (aRBM) to the IsDB projects funded under the Lives and Livelihoods Fund



Lives and
Livelihoods
Fund

aRBM Review | Issue #9 | April 2024



BILL & MELINDA
GATES foundation



مركز الملك سلمان
للإغاثة والأعمال الإنسانية
KING SALMAN
HUMANITARIAN AID & RELIEF CENTRE



Synergy in action

Unifying LLF across borders
for lasting community impact



“ We used to walk a considerable distance to the neighbouring town to mill our grains until we were introduced to the LLF project in Kano. Thanks to the project, we received hammer mills and training on hygienic grain processing methods. We no longer have to undertake those long trips. We process our grains and even sell our products to members of the community. We are truly grateful for the support.

Mariya Salisu Adamu

Beneficiary of a small-scale rice processing center
Mutajalo Community, Ungoggo LGA
Kano State Agro-Pastoral Development Project
(KSADP)
Nigeria

aRBM updates

Beneficiary of the Sustainable Pastoralism Development Program in Burkina Faso

A reminder of which projects constitute the 4 Early Adopter Sites (EAS) and which ones are the Expand projects:

EARLY-ADOPTER PROJECTS



Senegal – Support to the Malaria Control and Elimination Project



Nigeria – Kano State Agro-Pastoral Development Project



The Gambia – Regional Rice Value Chain Development Program



Burkina Faso – Strengthening PHC* to Improve Health and Nutrition

EXPAND (PHASE I) PROJECTS



Guinea – Conakry Sanitation Project



Senegal – Sustainable Pastoralism Development Program



Cameroon – Support of Elimination of Mother to Child Transmission of HIV



Benin – Community Health, Human Resources, and Nutrition



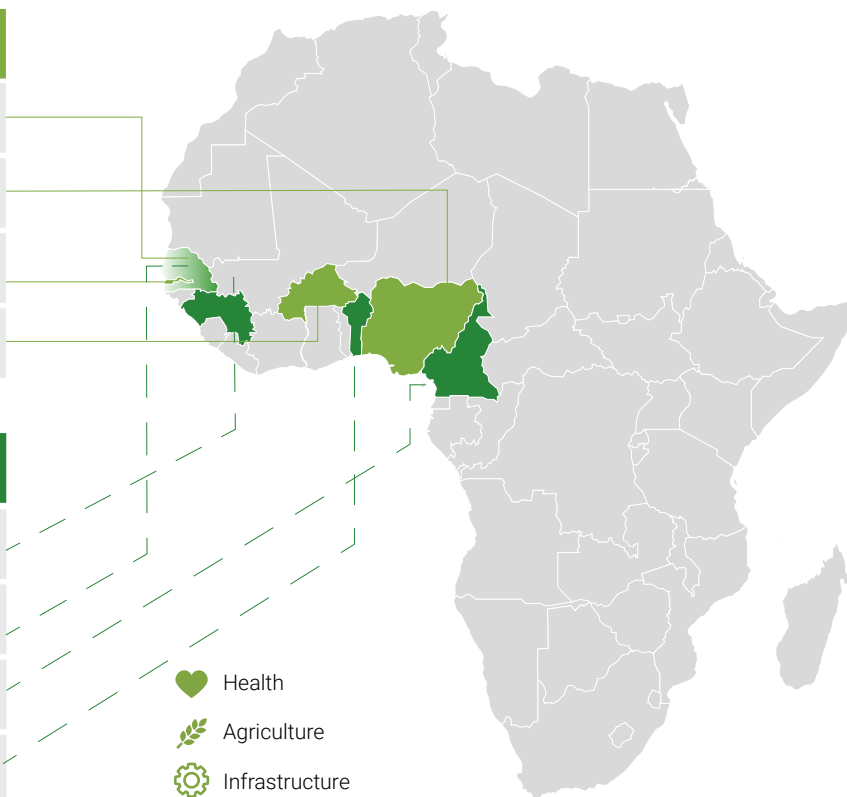
Health



Agriculture

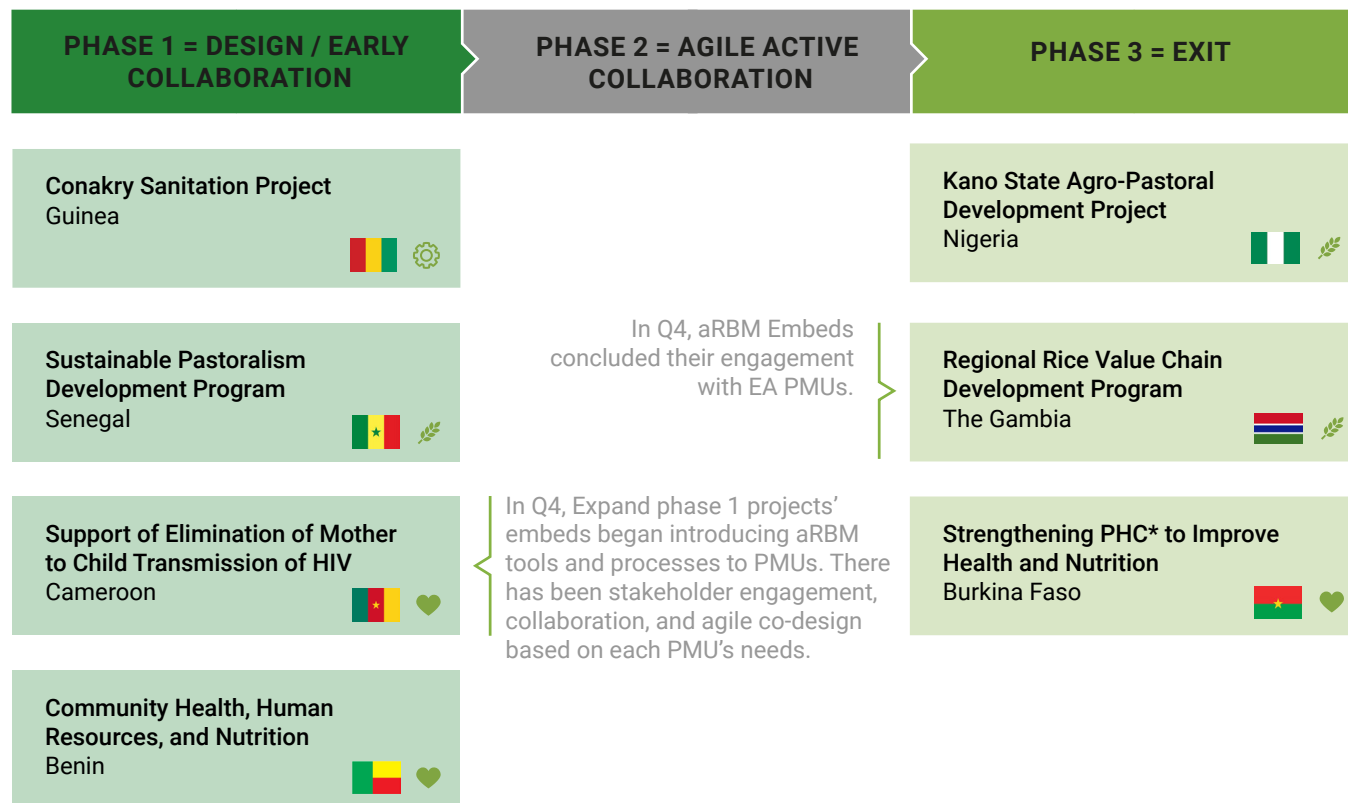


Infrastructure

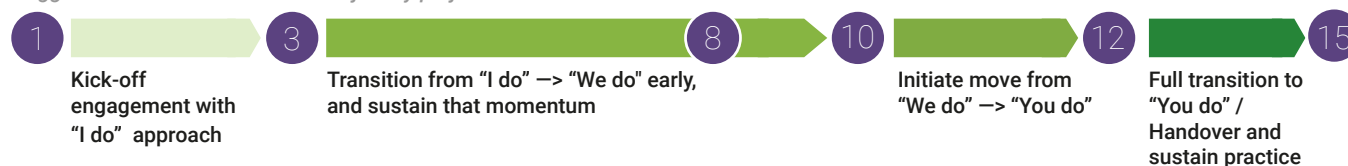


We are progressing through the aRBM journey: Transitioning support as early adopters conclude and phase 1 expansion projects accelerate engagement.

DELIVERY IS ADJUSTED BASED ON SPECIFIC PROJECT NEED



Suggested timeline - Embeds will adjust by project need



Note: Embedded support for EAs was 15 months. For EC1, the timeline as adjusted and is 12 months.

We are sharing Insights for Future Growth with the embeds' reflection session series: Key Stories and Lessons Learned from Phase 1 Expansion Projects



Benin



The Secretary General of the Ministry of Health is seen distributing examination papers to candidates taking part in the recruitment process for health agents.



Guinea



Embed facilitates IsDB field mission: stakeholder engagement on project Implementation and future steps.



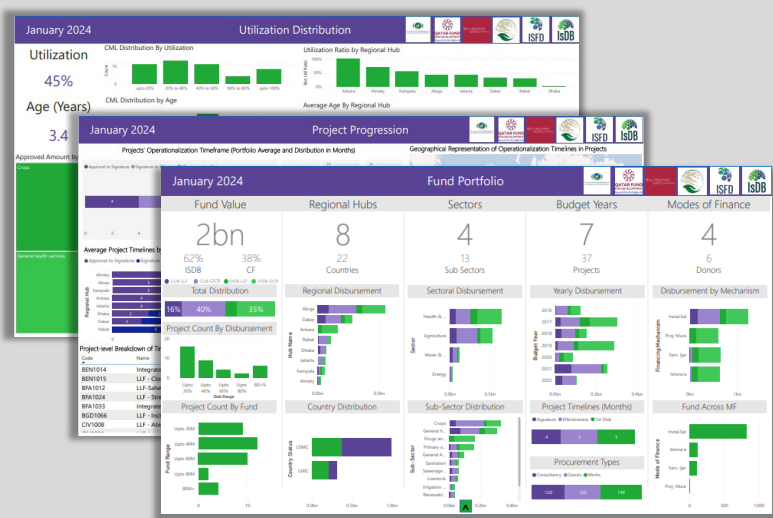
Cameroon



Workshop on PMU data collection tool utilization in bafoussam: engaging sanitary district focal points, followed by weekly PMU sessions to assist in individual work plan development.

Enhancing Workflow Efficiency: Introducing a New Dashboard for Comprehensive Performance Monitoring and Data Analysis

A new dashboard is currently in development to enhance your workflow by offering a comprehensive view of your key performance indicators (KPIs), metrics, and other pertinent information aligned with your objectives. This tool will enable real-time monitoring and analysis of data, empowering you to make informed decisions and effectively track performance. Additionally, it will facilitate seamless information sharing with headquarters, ensuring clarity and accessibility from PMUs to regional hubs to HQ.



Key Takeaways

- Data Analysis:** We successfully processed and analyzed three key data sets—project attributes, disbursements, and procurements.
- Demonstrated Capabilities:** Our use of Power BI illustrated seamless integration with existing data, emphasized the importance of data curation for added analytical insight, and highlighted our commitment to addressing user requirements effectively.
- Scalability:** Our Proof-of-Concept (POC) draft is dynamic and designed for scalability, enabling comprehensive data analysis across an expanding number of projects without restrictions.
- Continuous Improvement:** The current draft, marking the beginning of our development in February, is set for ongoing enhancements and stakeholder engagement to further demonstrate our system's capabilities.
- Prioritization:** Our current emphasis has been on demonstrating core functionality and operational viability, with plans to polish formatting and finer details in preparation for wider dissemination.

Latest LLF news



Beneficiaries from the Malaria Elimination Program in Senegal



Latest news

The Impact Committee Meeting in Jeddah, KSA

The Impact Committee (IC) convened on March 5, 2024, at IsDB HQ in Jeddah, KSA, boasting participation from key representatives of all LLF donor organizations, including the Abu Dhabi Fund for Development (ADFD), the Bill and Melinda Gates Foundation (BMGF), the Islamic Development Bank (IsDB), the Islamic Solidarity Fund for Development (ISFD), the King Salman Humanitarian Aid and Relief Centre (KSrelief), and the Qatar Fund for Development (QFFD).

H.E. Dr. Muhammad Sulaiman Al Jasser, Chairman of the Islamic Development Bank (IsDB) Group, made a gracious appearance to welcome the committee. In his address, he lauded the remarkable work being undertaken and reaffirmed his unwavering commitment to the LLF, and extended his gratitude to fellow donors for their ongoing support.

The meeting then started with a comprehensive agenda, including a thorough review of operational updates, portfolio performance, and

financial statements for 2023. Discussions centered on the advancements made in portfolio-level communication, the progress of adaptive Results Based Management (aRBM), future replenishment strategies, and preparations for the IsDB Golden Jubilee Event.

The atmosphere of the meeting was notably positive, with all donors expressing satisfaction with current progress and enthusiasm for the future of the LLF.



Latest news



The Ministry of Health in Benin Launches Recruitment Drive for 1,116 Health Agents to Bridge Gaps in Community Health and Nutrition

The project "Bridging Gaps, Human Resources, Community Health, and Nutrition" is funded by IsDB and the LLF Fund. Implemented by the Ministry of Health and CNLS-TP, its main objective is to improve access to primary healthcare and nutrition services in targeted regions. The primary goal is to reduce disparities in rural areas, which currently lack essential services such as healthcare and nutrition.

As part of the project, the Ministry of Health in Benin launched a competition for the recruitment of 1,116 health agents. The phase of written tests took place in three key cities:

Cotonou, Abomey, and Parakou. The health agents selected after this competition will be trained and deployed in the targeted regions to address the needs of the communities. This initiative marks a significant step in the fight against health inequalities and reinforces the government's commitment to a community health policy for an improvement in the living conditions of the population.



Latest news

Empowering Livestock and Fisheries in Mali with state-of-the-art equipment

His Excellency the Minister of Livestock and Fisheries in Mali, Mr. Youba BA, inaugurated an animal product control laboratory and handed over the following equipment, financed by the Islamic Development Bank (IDB) and the LLF through the "Sustainable Pastoralism Development Program":

- An animal product control laboratory equipped with analysis equipment
- A nitrogen generator
- 02 refrigerated meat transport trucks
- 02 pickup trucks

H.E. Minister Youba BA highlighted: *"Livestock encounters various challenges, including issues related to animal health and inadequate equipment, which greatly hamper animal production, its value, and our access to international livestock markets."* This initiative seeks to enhance the technical capabilities of the ministry's services through the provision of modern equipment to tackle challenges concerning animal health and equipment shortages. It is anticipated that this endeavour will significantly enhance productivity and competitiveness within Mali's livestock sector.



Latest news

Advancing Sanitation Initiatives in Conakry, Guinea: Strengthened Collaboration and Technical Support

During the month of February 2024, the Project Management Unit of the Conakry Sanitation Project, in collaboration with its partners, carried out a series of key activities, highlighting the commitment and efforts of local authorities in raising awareness among the populations affected by the project's activities, notably the Sonfonia sludge treatment plant. As part of these efforts, a support and technical assistance mission from the Islamic Development Bank took place in Conakry from February 21 to 23, 2024. The mission included Mr. Bachir SOUBEROU, Head of Operations/Social Infrastructure, Mr. Bipin DANGOL, Senior Sanitation Specialist, and Mr. Papa SY, Senior Specialist in Urban Development.

During the mission, two significant events occurred: (1) a courtesy and appreciation visit was paid to the Governor of

the city of Conakry for her involvement in managing social issues related to the project's activities. During this visit, she took the opportunity to reaffirm her continuous support for the project to prevent any delays in the implementation of activities; and (2) a visit to the site of ongoing construction works related to the rehabilitation of the Sonfonia sludge treatment plant (STBV).

On the ground, the mission raised awareness among local authorities (municipality, neighborhoods, sectors, opinion leaders, etc.) about the importance of the ongoing works and sought their support.

A woman in Niger is shown from the chest up, carrying a large, rounded, reddish-brown clay pot balanced on her head. On top of the clay pot sits a green-lidded plastic container with a white body and colorful floral patterns. The woman is wearing a bright orange headscarf with a black polka-dot pattern and a matching orange garment with black floral designs. She is smiling and waving her right hand towards the camera. The background is a blurred, dry, outdoor environment with some greenery in the distance.

Hear from those
who matter most

Beneficiaries of the "Health System Strengthening with Emphasis on Maternal, Neonatal and Child Health Services" project (NER1028) in Niger



Success story

"Saving Lives: The Impact of Strengthening Maternal, Newborn, and Child Health Services in Niger"

Kadi Kalidou, a dignified leader with a warm smile, presides over the women's group of Agali, a quaint village nestled 132 kilometers southeast of Niger's bustling capital, Niamey. Amidst a circle of women and children, she expresses her gratitude for the transformative impact of the "Strengthening the Health System with emphasis on Maternal, Newborn and Child Health" project (NER1028), funded by the Lives and Livelihoods Fund (LLF). "The

people of Agali village, especially women and children, are thrilled with the enhanced services provided by the health centers. It's as if we've been gifted a plane ticket to Mecca, an opportunity to experience a better life and brighter future." Her eyes gleam with hope and contentment, a testament to the profound change that has uplifted her community.

In the vast and beautiful land of Niger, the health system faces immense challenges. With limited resources and inadequate infrastructure, the struggle to provide quality healthcare to the mothers, newborns, and children of the country is constant. But hope shines bright amidst all these challenges. The project team is working tirelessly on the ground to improve the healthcare available to the most vulnerable members of society.



With a mission to bring down their mortality rates, the project collaborates with the government of Niger and key partners like UNFPA, UNICEF, and WHO to create a sustainable and effective healthcare system for all. The project's main focus is to 1) reduce maternal, neonatal, and infant mortality rates, 2) increase access to maternal, newborn, and child health (MNCH) services, and last but not least 3) strengthen the health system in Niger.

"According to our observations in 2022, there has been a clear regression in maternal deaths, which is linked to the various activities that have been financed by the project", says Yayé Katanga, Senior Resident Doctor. With over nine million beneficiaries in 17 districts, the project is introducing community awareness programs, equipping and operationalizing 65 integrated health centers, establishing four MNCH training sites, and upgrading the referral and counter-referral system with 70 four-wheel-drive ambulances. More than 3 104 healthcare workers are being trained to provide quality care to pregnant women, newborns, and children. As a result of these efforts, 90% of pregnant women are now receiving at least four prenatal consultations, a significant improvement from the previous rate of 37%, and 80% of live births are now attended by skilled health personnel, compared to the previous rate of only 29%.

The impact of the project has been nothing short of remarkable, with countless testimonials attesting to the positive change it has brought. Kadi Amadou, Public Health Doctor declares *"the construction of SCI type 2 centers which provide basic health care services for children under the age of five are now staffed with trained health workers who provide a range of services including vaccinations, growth monitoring, and treatment for common childhood illnesses, and they are also equipped with modern sanitary equipment and medicines."*

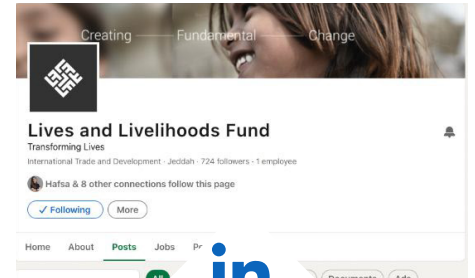
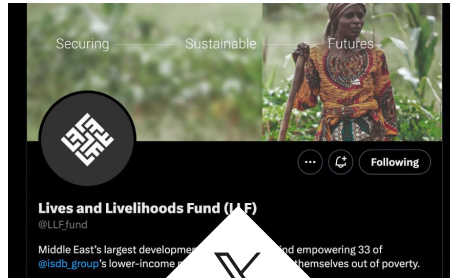
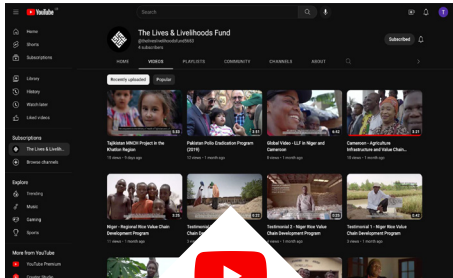
"The Nigerien state sincerely thanks the LLF for their amazing contribution!" says Dr. Mamane Sani, Regional Director of Public Health in the region of Dosso, located in the southwestern part of the country before adding "thanks to this project, health workers have been empowered to better manage maternal and child illnesses" and Dr. Soumana Harouna, Chief Doctor states "This has been a source of pride for the villages and communities that now have access to improved health services. The provision of four-wheel drive ambulances has greatly improved medical evacuations, making it possible to serve even the most remote areas quickly." In conclusion, the NER1028 project has made remarkable progress in ensuring a brighter future for the people of Niger, particularly for mothers, newborns, and children. With the continued support of donors and

stakeholders, the project is poised to build on its successes and make an even greater impact on the lives of millions of Nigeriens. The NER1028 project serves as an inspiring example of how targeted and sustained efforts can lead to positive and lasting change in even the most challenging of environments.



Subscribe to our social media channels

and stay connected to the LLF and the stories that unite us all.



We are eager to hear from you.
Please send your inquiries about aRBM to:
llf-mu@isdb.org